

PIER 50

DRINK MENU

COCKTAIL

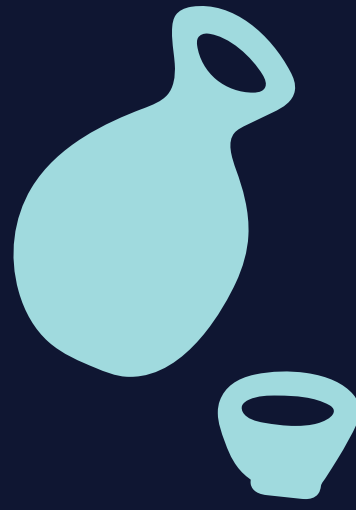
- WONGO** 13
won premium soju, mango, lemon, club soda
- YUZU BLOSSOM** 12
won premium soju, honey yuzu tea, tonic water
- MINTY-MELON** 12
won premium soju, watermelon, lemon, mint, starry
- TOKYO BAY** 12
won premium soju, calpico, blue curacao syrup, lemon, starry
- SHISO-PRETTY** 12
won premium soju, simple syrup, lime, shiso, starry
- SOJU KYURI-OUS** 12
won premium soju, simple syrup, lime, cucumber, mint, soda water
- SOJU & TONIC** 10
won premium soju, lemon, tonic water

BOTTLED COCKTAIL

- JPOP** (white peach or lychee) 9

MOCKTAIL

- ICHIGO FIZZ** 13
n/a gin, calpico, strawberry, pandan, lemon, soda water
- SHOGUN SUNRISE** 12
n/a tequila, orange cordial, lime, shiso
- GINZA GIMLET** 12
n/a gin, spiced lime cordial, yuzu, rice vinegar
- KAMI KIN** 12
n/a tequila, yuzu, lime, shiso syrup, egg white
- YUZU SPRITZER** 10
honey yuzu tea, lime, simple syrup, soda water



SOJU

- WON PREMIUM SOJU** 35
- SAERO** 15
- CHUM-CHURUM** 15
fresh, yogurt, peach, strawberry, apple-mango, green grape

SAKE

- HOUSE HOT SAKE** 12
filtered
- MU** (junmai daiginjo) 35
- WAKATAKE ONIGOROSHI** 32
(junmai daiginjo)
- KIKUSUI** (junmai ginjo) 22/40
- KAMOTSURU** (daiginjo) 20
- YAEGAKI DRAFT** (junmai) 20
unfiltered
- DASSAI 45 NIGORI** 30
- YUZU ALADDIN NIGORI** 18
- SHO CHIKU BAI NIGORI** 16
- HOMARE "STRAWBERRY" NIGORI** 18



BEER

glass / pitcher

DRAFT

| | |
|------------------------------|-----------------------|
| SAPPORO BEER TOWER | 45 |
| SAPPORO | 10 / 35 |
| KIRIN ICHIBAN | 10 / 35 |
| BLUE MOON | 10 / 35 |
| 805 | 10 / 35 |
| LEFT EYE RIGHT EYE (track 7) | 12 / 37 |
| TRULY (wild berry) | 10 / 35 |
| STELLA ARTOIS | 10 / 35 |
| ROTATING | ask server for detail |

BOTTLE/CAN

| | |
|-------------------------------|------|
| ASAHI | 6/11 |
| SAPPORO BLACK | 12 |
| ORION | 7/13 |
| CORONA | 6 |
| SIERRA NEVADA | 6 |
| HEINEKEN | 6 |
| HEINEKEN 0.0 (NON-ALCOHOLOIC) | 6 |

WINE

| | |
|------------------------------------|----|
| red | |
| CABERNET SAUVIGNON (josh) | 12 |
| MERLOT (robert mondavi) | 12 |
| PINOT NOIR (kenwood) | 12 |
| HOUSE CABERNET SAUVIGNON | 9 |
| white | |
| CHARDONNAY (chateau ste. michelle) | 12 |
| SAUVIGNON BLANC (oyster bay) | 12 |
| HOUSE CHARDONNAY | 9 |
| other | |
| PLUM WINE | 9 |
| SPARKING WINE (mionetto) | 11 |

NON-ALCOHOLIC

| | |
|--|-----|
| FOUNTAIN DRINK | 4 |
| pepsi, diet pepsi, pepsi zero, starry, crush orange, raspberry iced tea, unsweetened iced tea, lemonade, mug root beer, dr pepper, arnold palmer | |
| JUICE & TEA | 3.5 |
| orange juice, apple juice, iced green tea, hot genmai tea | |
| RAMUNE | 4.5 |
| MELON CREAMY SODA | 5.5 |
| MANGO CREAMY SODA | 5.5 |
| YUZU SODA (yuzu & white peach) | 4.5 |
| PERRIER | 5.5 |
| FIJI WATER | 5 |



GOVERNMENT WARNING: (1) According to the Surgeon General, women should not drink alcoholic beverages during pregnancy because of the risk of birth defects. (2) Consumption of alcoholic beverages impairs your ability to drive a car or operate machinery, and may cause health problems.